



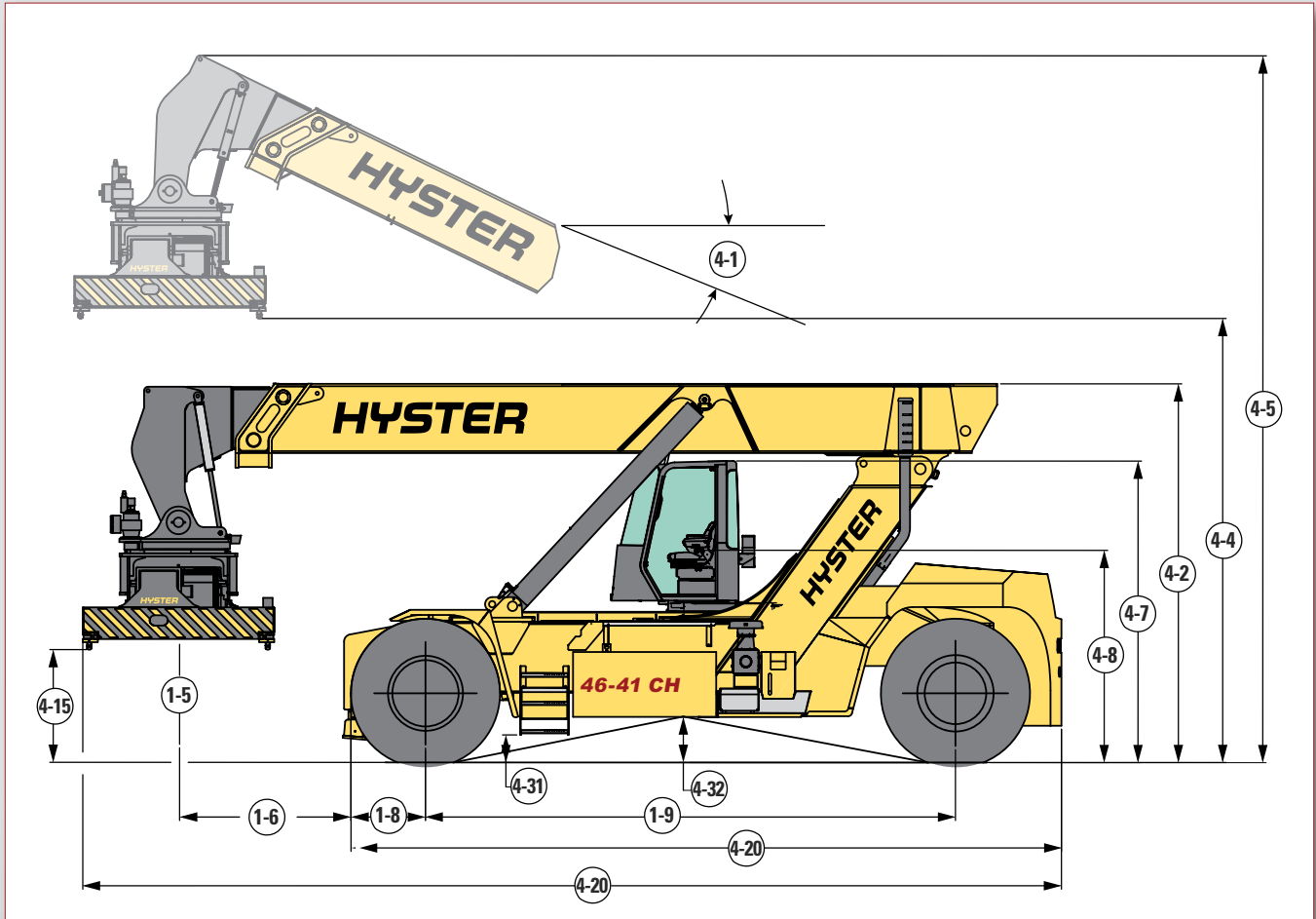
**STRONG PARTNERS.
TOUGH TRUCKS.™**



RS46 SERIES TECHNICAL GUIDE

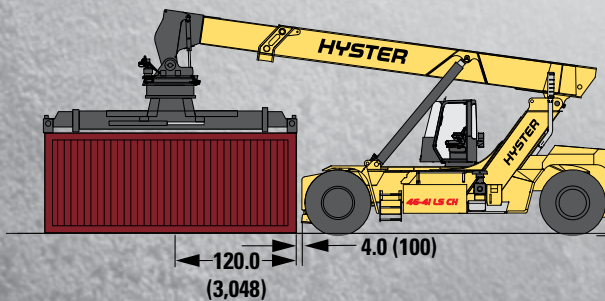
WWW.HYSTER.COM

> DIMENSIONS

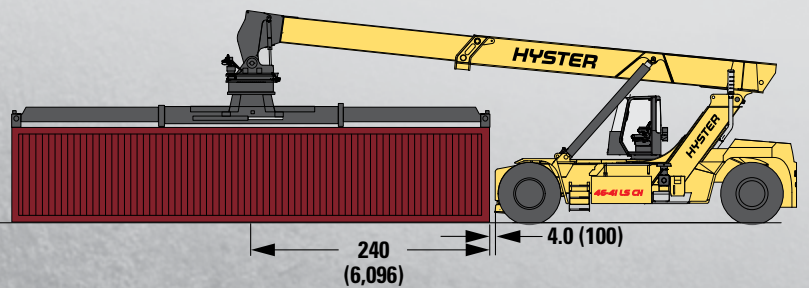


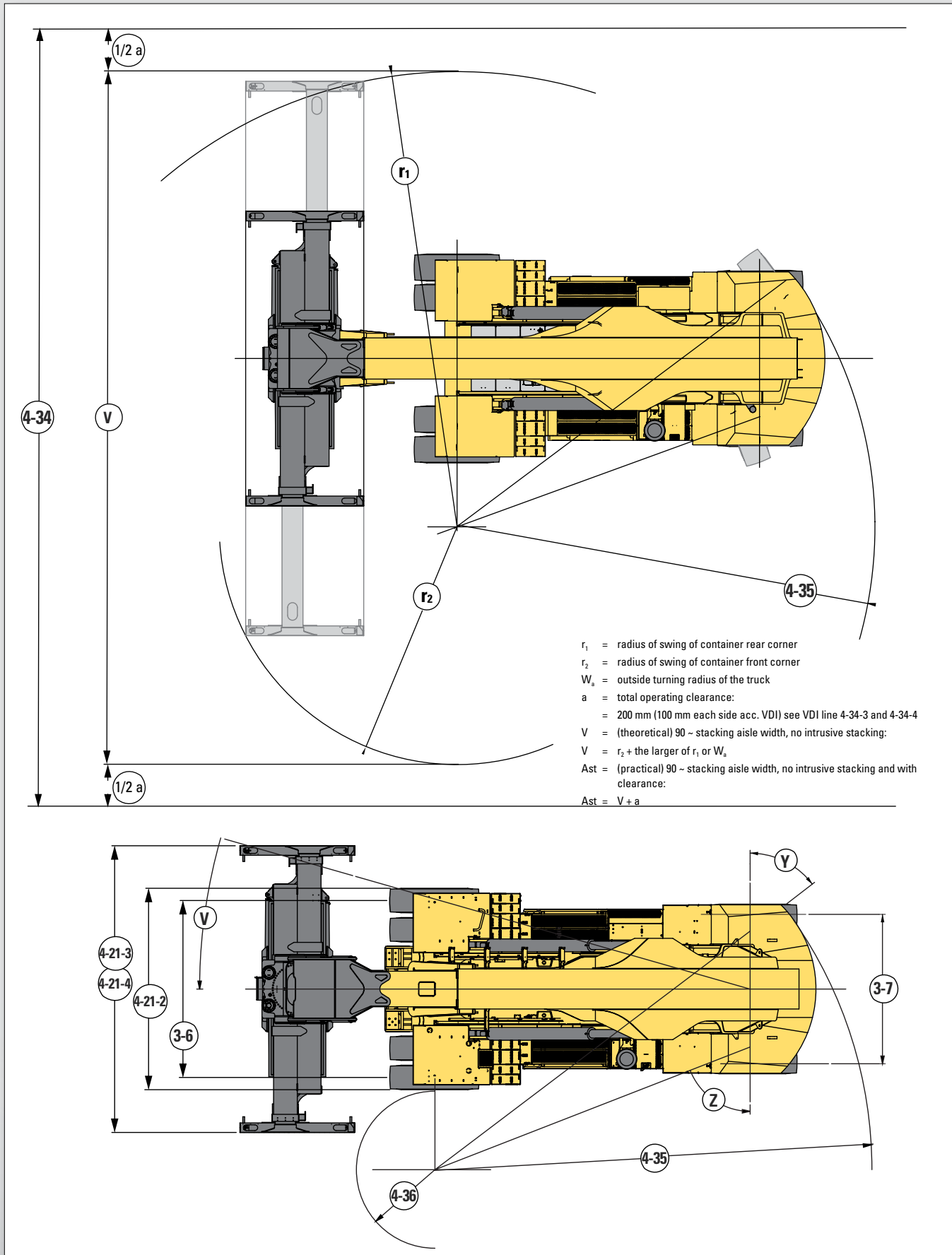
MAXIMUM CAPACITY CONTAINER PICKING END TO END				
MODEL	20'		40'	
	lb	kg	lb	kg
RS46-29	71,000	32,000	31,000	14,000
RS46-33	77,000	35,000	35,000	16,000
RS46-36	93,000	42,000	44,000	20,000
RS46-41S	99,000	44,900	58,000	26,300
RS46-41L	99,000	44,900	58,000	26,300
RS46-41LS	99,000	44,900	58,000	26,300
RS46-41XLS	99,000	44,900	61,000	27,500

20'-0 END ON LIFTING CAPACITIES



40'-0 END ON LIFTING CAPACITIES







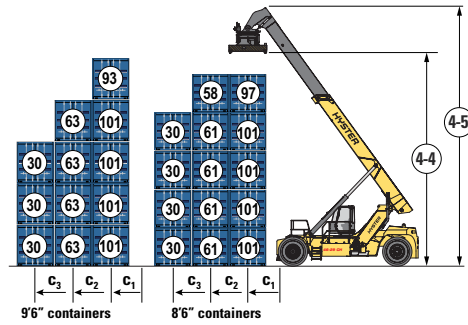
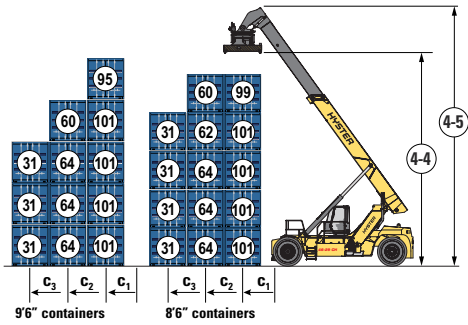
RATED CAPACITIES AND STACKING HEIGHTS

(shown in 1,000 lbs.)

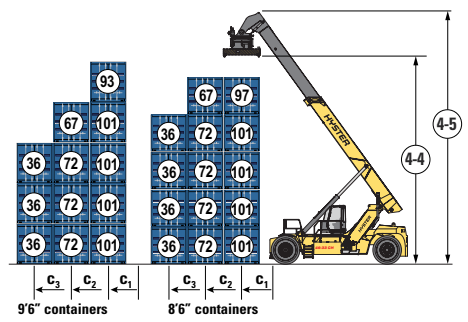
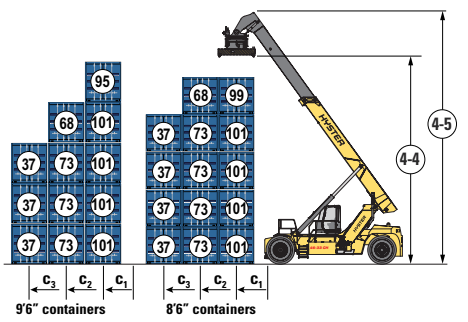
MECHANICAL PILE SLOPE

POWERED PILE SLOPE

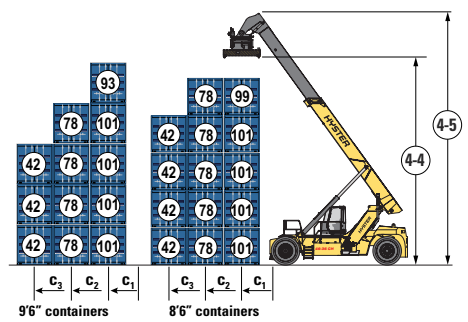
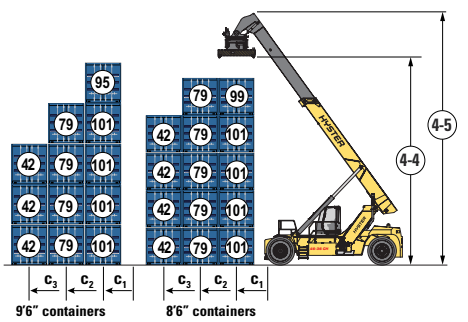
RS 46-29 CH CONTAINER SPREADER



RS 46-33 CH CONTAINER SPREADER



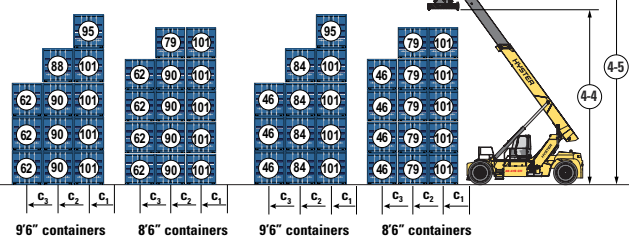
RS 46-36 CH CONTAINER SPREADER



RS 46-41S CH CONTAINER SPREADER

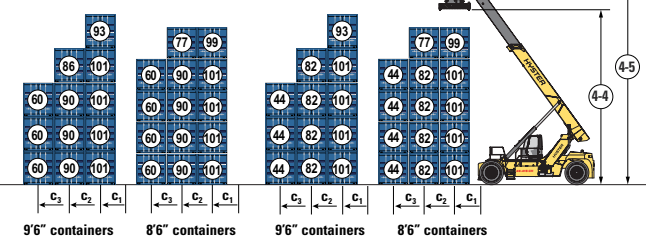
Stabilizer applied (truck static)

Stabilizer NOT applied



Stabilizer applied (truck static)

Stabilizer NOT applied



C ₁	C ₂	C ₃
73"	150"	249"
1865mm	3815mm	6315mm

Note: All load centers c₁, c₂, c₃ are taken from the front face of the (front) tires, deduct 3.9" for load centers taken from the front face of the stabilizer.

RATED CAPACITIES AND STACKING HEIGHTS

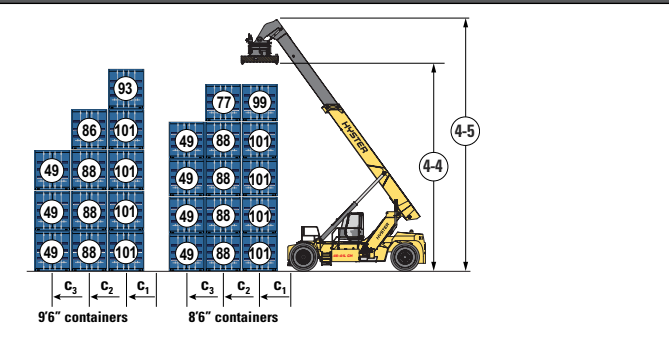
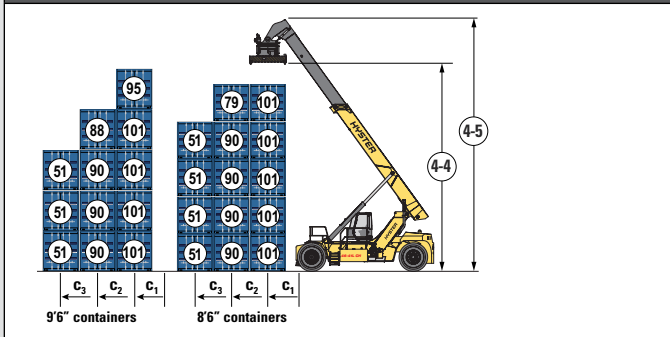


(shown in 1,000 lbs.)

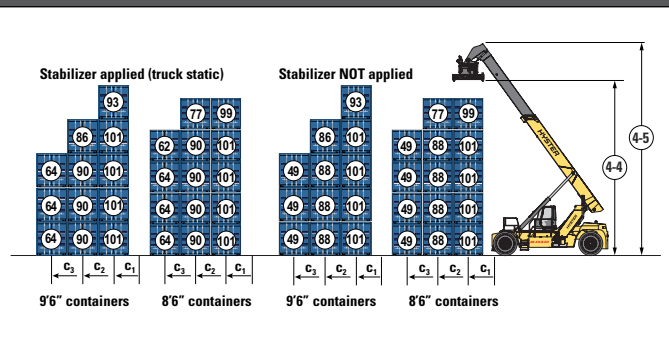
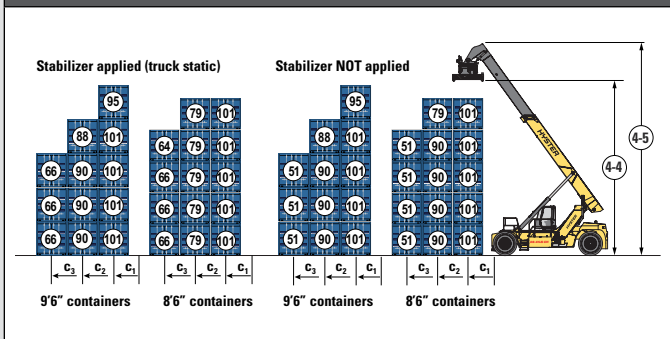
MECHANICAL PILE SLOPE

POWERED PILE SLOPE

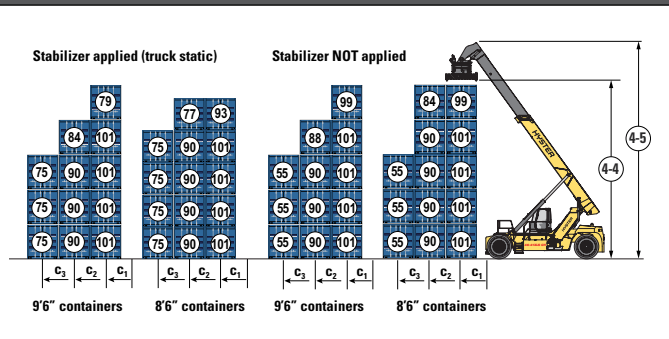
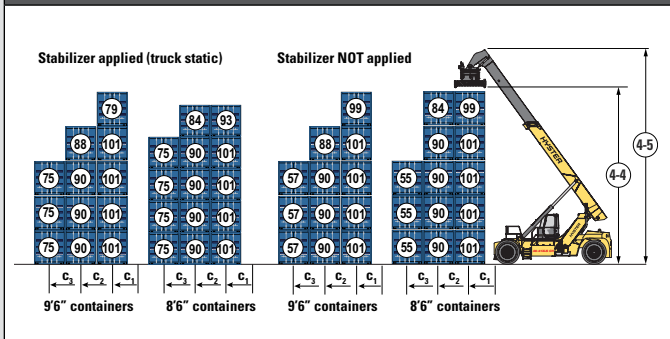
RS 46-41L CH CONTAINER SPREADER



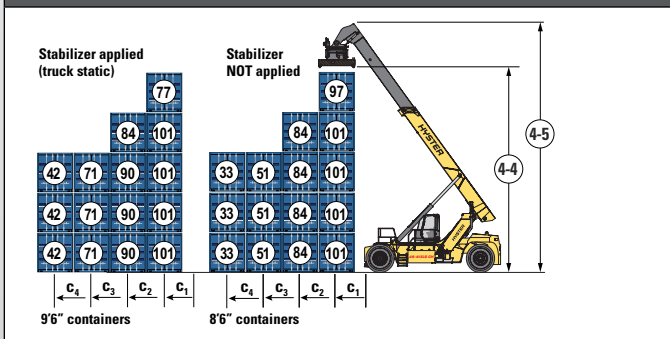
RS 46-41LS CH CONTAINER SPREADER



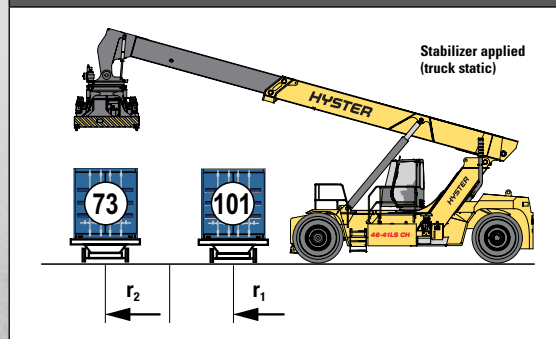
RS 46-41XLS CH CONTAINER SPREADER



RS 46-41XLS CH CONTAINER SPREADER (WTP WITH POWERED PILE SLOPE)



HANDLING IN SECOND RAIL (MECHANICAL PILE SLOPE)



C ₁	C ₂	C ₃	C ₄
73"	150"	249"	344"
1865mm	3815mm	6315mm	8750mm

Note: All load centers c_1, c_2, c_3, c_4 are taken from the front face of the (front) tires, deduct 3.9" for load centers taken from the front face of the stabilizer.

r ₁	r ₂
73"	252"
1865mm	6400mm

➤ RS46-29 / RS46-33 / RS46-36 SPECIFICATIONS

		HYSTER				HYSTER				HYSTER								
		RS46-29 CH				RS46-33 CH				RS46-36 CH								
		Diesel				Diesel				Diesel								
		Seated				Seated				Seated								
GENERAL	1-1	Manufacturer																
	1-2	Model designation																
	1-3	Powertrain / drivetrain																
	1-4	Operator type																
	1-5-1	Load capacity at load center distance c_1 without/with stabilizer (1)	Q_1	lbs	kg	101,413	46,000	n/a	n/a	101,413	46,000	n/a	n/a	101,413	46,000	n/a	n/a	
	1-5-2	Load capacity at load center distance c_2 without/with stabilizer (1)	Q_2	lbs	kg	63,934	29,000	n/a	n/a	72,753	33,000	n/a	n/a	79,366	36,000	n/a	n/a	
	1-5-3	Load capacity at load center distance c_3 without/with stabilizer (1)	Q_3	lbs	kg	30,865	14,000	n/a	n/a	37,479	17,000	n/a	n/a	41,888	19,000	n/a	n/a	
	1-6-1	Load center distance c_1 (2)	c_1	in	mm	73	1,865			73	1,865			73	1,865			
	1-6-2	Load center distance c_2 (2)	c_2	in	mm	150	3,815			150	3,815			150	3,815			
	1-6-3	Load center distance c_3 (2)	c_3	in	mm	249	6,315			249	6,315			249	6,315			
1-8	Load distance, ctr of drive axle to face of front tires/front of stabilizer	x	in	mm	33	835	n/a	n/a	33	835	n/a	n/a	37	930	n/a	n/a		
1-9	Wheelbase	y	in	mm	244	6,200			244	6,200			244	6,200				
1-10	Stacking height at first row (number x container height)	#	#	5 x 9' 6"														
WT.	2-1	Service weight		lbs	kg	151,017	68,500			159,174	72,200			174,827	79,300			
	2-2-1	Axle loading with load, front / rear at c_1		lbs	kg	223,439	101,350	28,991	13,150	222,887	101,100	37,699	17,100	227,517	103,200	48,722	22,100	
	2-3-1	Axle loading without load, front / rear at c_1		lbs	kg	77,823	35,300	73,193	33,200	77,162	35,000	82,012	37,200	80,469	36,500	94,358	42,800	
WHEELS	3-1	Tire type	Pneumatic															
	3-2	Tire size, front	18.00-25 40PR															
	3-3	Tire size, rear	18.00-25 40PR															
		Wheels, number front / rear (X = driven wheels)	x4 / 2															
	3-6	Tread, front	b_{10}	in	mm	146	3,703			146	3,703			146	3,703			
	3-7	Tread, rear	b_{11}	in	mm	120	3,060			120	3,060			120	3,060			
	4-1	Boom angle minimum / maximum		deg	deg	0 / 59												
4-2	Height of boom lowered	h_1	in	mm	185	4,700			185	4,700			189	4,795				
4-4-1	Lift height at load center c_1 (3)	$h_{3,1}$	in	mm	601	15,260			601	15,260			605	15,355				
4-4-2	Lift height at load center c_2 (3)	$h_{3,2}$	in	mm	545	13,850			545	13,850			549	13,945				
4-5	Height, boom extended	h_4	in	mm	713	18,110			713	18,110			717	18,205				
4-7	Height of overhead guard (cabin)	h_6	in	mm	146	3,720			146	3,720			150	3,815				
4-8	Seat height to SIP (4)	h_7	in	mm	101	2,555			101	2,555			104	2,650				
4-15	Height under Twistlock - lowered (3)	h_{13}	in	mm	53	1,345			53	1,345			57	1,440				
4-19	Overall length	l_1	in	mm	329	8,360			329	8,360			341	8,650				
4-20	Overall length including boom retracted	l_2	in	mm	467	11,873			467	11,873			475	12,073				
4-21-2	Overall width across all of truck	b_2	in	mm	165	4,200			165	4,200			165	4,200				
4-21-3	Overall width across spreader 20'	$b_{1,20}$	in	mm	240	6,100			240	6,100			240	6,100				
4-21-4	Overall width across spreader 40'	$b_{1,40}$	in	mm	480	12,200			480	12,200			480	12,200				
4-31	Ground clearance, lowest point	m_1	in	mm	11	285			11	285			12	304				
4-32	Ground clearance, center or wheelbase	m_2	in	mm	17	437			17	437			21	532				
4-34-3	Aisle width: 20' container (5)	Ast_{20}	in	mm	498	12,639			498	12,639			525	13,330				
4-34-4	Aisle width: 40' container (5)	Ast_{40}	in	mm	567	14,403			567	14,403			576	14,620				
4-35	Outside turning radius	W_a	in	mm	331	8,420			331	8,420			362	9,200				
4-36	Internal turning radius	b_{13}	in	mm	59	1,500			59	1,500			79	2,000				
PERFORMANCE	PERFORMANCE		CUMMINS QSL9 TIER 4F ENGINE - TE 32															
	5-1	Travel speed with / without load		mph	km/h	12.4	20	13.7	22	12.4	20	13.7	22	13.0	21	14.3	23	
	5-2	Lifting speed with / without load		ft/min	m/s	55	0.28	94	0.48	55	0.28	94	0.48	55	0.28	94	0.48	
	5-3	Lowering speed with / without load		ft/min	m/s	91	0.46	89	0.45	91	0.46	89	0.45	91	0.46	89	0.45	
	5-7	Gradeability - 1 mph 1.6 km/h with / without load (6)		%	%	26	26	35	35	25	25	35	35	23	23	33	33	
	PERFORMANCE		CUMMINS QSM11 335HP TIER 3 ENGINE - TE 32															
	5-1	Travel speed with / without load		mph	km/h	13.0	21	14.3	23	13.0	21	14.3	23	14.3	23	16.2	26	
	5-2	Lifting speed with / without load		ft/min	m/s	55	0.28	94	0.48	55	0.28	94	0.48	55	0.28	94	0.48	
	5-3	Lowering speed with / without load		ft/min	m/s	91	0.46	89	0.45	91	0.46	89	0.45	91	0.46	89	0.45	
	5-7	Gradeability - 1 mph 1.6 km/h with / without load (6)		%	%	26	26	35	35	25	25	35	35	25	25	33	33	
	PERFORMANCE		QSM11 300HP TIER 3 ENGINE - TE 27															
	5-1	Travel speed with / without load		mph	km/h	12.4	20	14.3	23	12.4	20	14.3	23	12.4	20	15.5	25	
	5-2	Lifting speed with / without load		ft/min	m/s	49	0.25	94	0.48	49	0.25	94	0.48	49	0.25	94	0.48	
	5-3	Lowering speed with / without load		ft/min	m/s	91	0.46	89	0.45	91	0.46	89	0.45	91	0.46	89	0.45	
	5-7	Gradeability - 1 mph 1.6 km/h with / without load (6)		%	%	22	22	36	36	22	22	36	36	19	19	34	33	

- Load capacities shown with mechanical pile slope (MPS) spreader. Deduction for using powered pile slope spreader is approx. 2,000 lbs. (900 kg)
- From face of front tires.
- With Mechanical Pile Slope (MPS). For optional Powered Pile Slope (PPS) function: deduct 12.2 in (310 mm).
- Full suspension seat in depressed position.
- Spreader at 315 in (8.0 m) high, central above front axle; container 0 in/mm in front of tires; includes 2 x 4 in (100 mm) clearance.
- Gradeability figures provided for comparison of tractive performance, but are not intended to endorse the operation of vehicle on the stated inclines.

RS46-41S / RS46-41L SPECIFICATIONS <

	GENERAL			HYSTER				HYSTER				
				RS46-41S CH				RS46-41L CH				
1-1	Manufacturer											
1-2	Model designation											
1-3	Powertrain / drivetrain			Diesel				Diesel				
1-4	Operator type			Seated				Seated				
1-5-1	Load capacity at load center distance c_1 without/with stabilizer (1)	Q_1	lbs	kg	101,413	46,000	101,413	46,000	101,413	46,000	n/a	n/a
1-5-2	Load capacity at load center distance c_2 without/with stabilizer (1)	Q_2	lbs	kg	83,776	38,000	90,390	41,000	90,390	41,000	n/a	n/a
1-5-3	Load capacity at load center distance c_3 without/with stabilizer (1)	Q_3	lbs	kg	46,297	21,000	61,729	28,000	50,706	23,000	n/a	n/a
1-6-1	Load center distance c_1 (2)	c_1	in	mm	73		1,865		73		1,865	
1-6-2	Load center distance c_2 (2)	c_2	in	mm	150		3,815		150		3,815	
1-6-3	Load center distance c_3 (2)	c_3	in	mm	249		6,315		249		6,315	
1-8	Load distance, ctr of drive axle to face of front tires / front of stabilizer	x	in	mm	37	930	41	1,030	37	930	n/a	n/a
1-9	Wheelbase	y	in	mm	244		6,200		264		6,700	
1-10	Stacking height at first row (number x container height)	#	#		5 x 9' 6"				5 x 9' 6"			
2-1	Service weight		lbs	kg	184,306				83,600			
2-2-1	Axle loading with load, front / rear at c_1		lbs	kg	232,367	105,400	53,352	24,200	227,958	103,400	55,556	25,200
2-3-1	Axle loading without load, front / rear at c_1		lbs	kg	85,319	38,700	98,988	44,900	84,217	38,200	97,885	44,400
3-1	Tire type				Pneumatic				Pneumatic			
3-2	Tire size, front				18.00-33 36PR				18.00-33 36PR			
3-3	Tire size, rear				18.00-33 36PR				18.00-33 36PR			
	Wheels, number front / rear (X = driven wheels)				x4 / 2				x4 / 2			
3-6	Tread, front	b_{10}	in	mm	146		3,703		146		3,703	
3-7	Tread, rear	b_{11}	in	mm	120		3,060		120		3,060	
4-1	Boom angle minimum / maximum		deg	deg	0 / 59				0 / 59			
4-2	Height of boom lowered	h_1	in	mm	189		4,795		189		4,795	
4-4-1	Lift height at load center c_1 (3)	$h_{3,1}$	in	mm	605		15,355		605		15,355	
4-4-2	Lift height at load center c_2 (3)	$h_{3,2}$	in	mm	549		13,945		549		13,945	
4-5	Height, boom extended	h_4	in	mm	717		18,205		717		18,205	
4-7	Height of overhead guard (cabin)	h_6	in	mm	150		3,815		150		3,815	
4-8	Seat height to SIP (4)	h_7	in	mm	104		2,650		104		2,650	
4-15	Height under Twistlock - lowered (3)	h_{13}	in	mm	57		1,440		57		1,440	
4-19	Overall length	l_1	in	mm	344		8,750		360		9,150	
4-20	Overall length including boom retracted	l_2	in	mm	475		12,073		475		12,073	
4-21-2	Overall width across all of truck	b_2	in	mm	165		4,200		165		4,200	
4-21-3	Overall width across spreader 20'	$b_{1,20}$	in	mm	240		6,100		240		6,100	
4-21-4	Overall width across spreader 40'	$b_{1,40}$	in	mm	480		12,200		480		12,200	
4-31	Ground clearance, lowest point	m_1	in	mm	10		250		12		304	
4-32	Ground clearance, center or wheelbase	m_2	in	mm	21		532		21		532	
4-34-3	Aisle width: 20' container (5)	Ast_{20}	in	mm	525		13,330		529		13,430	
4-34-4	Aisle width: 40' container (5)	Ast_{40}	in	mm	576		14,620		576		14,620	
4-35	Outside turning radius	W_a	in	mm	362		9,200		366		9,300	
4-36	Internal turning radius	b_{13}	in	mm	79		2,000		94		2,400	
	PERFORMANCE				CUMMINS QSL9 TIER 4F ENGINE - TE 32							
5-1	Travel speed with / without load		mph	km/h	13.0	21	14.3	23	13.0	21	14.3	23
5-2	Lifting speed with / without load		ft/min	m/s	55	0.28	94	0.48	55	0.28	94	0.48
5-3	Lowering speed with / without load		ft/min	m/s	91	0.46	89	0.45	91	0.46	89	0.45
5-7	Gradeability - 1 mph 1.6 km/h with / without load (6)		%	%	21	21	32	32	21	21	32	32
	PERFORMANCE				CUMMINS QSM11 335HP TIER 3 ENGINE - TE 32							
5-1	Travel speed with / without load		mph	km/h	12.4	20	14.9	24	12.4	20	14.9	24
5-2	Lifting speed with / without load		ft/min	m/s	55	0.28	94	0.48	55	0.28	94	0.48
5-3	Lowering speed with / without load		ft/min	m/s	91	0.46	89	0.45	91	0.46	89	0.45
5-7	Gradeability - 1 mph 1.6 km/h with / without load (6)		%	%	21	21	32	32	21	21	32	32
	PERFORMANCE				QSM11 300HP TIER 3 ENGINE - TE 27							
5-1	Travel speed with / without load		mph	km/h	11.8	19	13.7	22	11.8	19	13.7	22
5-2	Lifting speed with / without load		ft/min	m/s	49	0.25	94	0.48	49	0.25	94	0.48
5-3	Lowering speed with / without load		ft/min	m/s	91	0.46	89	0.45	91	0.46	89	0.45
5-7	Gradeability - 1 mph 1.6 km/h with / without load (6)		%	%	18	18	32	32	18	18	32	32

- (1) Load capacities shown with mechanical pile slope (MPS) spreader. Deduction for using powered pile slope spreader is approx. 2,000 lbs. (900 kg)
- (2) From face of front tires.
- (3) With Mechanical Pile Slope (MPS). For optional Powered Pile Slope (PPS) function: deduct 12.2 in (310 mm).
- (4) Full suspension seat in depressed position.
- (5) Spreader at 315 in (8.0 m) high, central above front axle; container 0 in/mm in front of tires; includes 2 x 4 in (100 mm) clearance.
- (6) Gradeability figures provided for comparison of tractive performance, but are not intended to endorse the operation of vehicle on the stated inclines.

> RS46-41LS / RS46-41XLS SPECIFICATIONS

GENERAL	1-1	Manufacturer				HYSTER				HYSTER			
	1-2	Model designation				RS46-41LS CH				RS46-41XLS CH			
WT.	1-3	Powertrain / drivetrain				Diesel				Diesel			
	1-4	Operator type				Seated				Seated			
	1-5-1	Load capacity at load center distance c_1 without/with stabilizer	Q_1	lbs	kg	101,413	46,000	101,413	46,000	101,413	46,000	101,413	46,000
	1-5-2	Load capacity at load center distance c_2 without/with stabilizer	Q_2	lbs	kg	90,390	41,000	90,390	41,000	90,390	41,000	90,390	41,000
	1-5-3	Load capacity at load center distance c_3 without/with stabilizer	Q_3	lbs	kg	50,706	23,000	66,139	30,000	57,320	26,000	74,957	34,000
	1-6-1	Load center distance c_1 (2)	c_1	in	mm	73		1,865		73		1,865	
	1-6-2	Load center distance c_2 (2)	c_2	in	mm	150		3,815		150		3,815	
	1-6-3	Load center distance c_3 (2)	c_3	in	mm	249		6,315		249		6,315	
	1-8	Load distance, ctr of drive axle to face of front tires / front of stabilizer	x	in	mm	37	930	41	1,030	37	930	41	1,030
	1-9	Wheelbase	y	in	mm	264		6,700		295		7,500	
WHEELS	1-10	Stacking height at first row (number x container height)	#	#		5 x 9' 6"				5 x 9' 6"			
	2-1	Service weight		lbs	kg	186,511		84,600		186,621		84,650	
	2-2-1	Axle loading with load, front / rear at c_1		lbs	kg	232,808	105,600	55,116	25,000	227,848	103,350	60,186	27,300
	2-3-1	Axle loading without load, front / rear at c_1		lbs	kg	89,067	40,400	97,444	44,200	91,051	41,300	95,570	43,350
	3-1	Tire type				Pneumatic				Pneumatic			
DIMENSIONS	3-2	Tire size, front				18.00-33 36PR				18.00-33 36PR			
	3-3	Tire size, rear				18.00-33 36PR				18.00-33 36PR			
	3-6	Tread, front	b_{10}	in	mm	146		3,703		146		3,703	
	3-7	Tread, rear	b_{11}	in	mm	120		3,060		120		3,060	
	4-1	Boom angle minimum / maximum		deg	deg	0 / 59				3 / 58			
	4-2	Height of boom lowered	h_1	in	mm	189		4,795		215		5,457	
	4-4-1	Lift height at load center c_1 (2)	$h_{3,1}$	in	mm	605		15,355		599		15,225	
	4-4-2	Lift height at load center c_2 (2)	$h_{3,2}$	in	mm	549		13,945		557		14,158	
	4-5	Height, boom extended	h_4	in	mm	717		18,205		725		18,420	
	4-7	Height of overhead guard (cabin)	h_6	in	mm	150		3,815		150		3,815	
PERFORMANCE	4-8	Seat height to SIP (3)	h_7	in	mm	104		2,650		104		2,650	
	4-15	Height under Twistlock - lowered (2)	h_{13}	in	mm	57		1,440		72		1,835	
	4-19	Overall length	l_1	in	mm	364		9,250		396		10,050	
	4-20	Overall length including boom retracted	l_2	in	mm	495		12,573		536		13,613	
	4-21-2	Overall width across all of truck	b_2	in	mm	165		4,200		165		4,200	
	4-21-3	Overall width across spreader 20'	$b_{1,20}$	in	mm	240		6,100		240		6,100	
	4-21-4	Overall width across spreader 40'	$b_{1,40}$	in	mm	480		12,200		480		12,200	
	4-31	Ground clearance, lowest point	m_1	in	mm	10		250		10		250	
	4-32	Ground clearance, center or wheelbase	m_2	in	mm	21		532		21		532	
	4-34-3	Aisle width: 20' container (4)	Ast_{20}	in	mm	529		13,430		582		14,780	
	4-34-4	Aisle width: 40' container (4)	Ast_{40}	in	mm	576		14,620		605		15,370	
	4-35	Outside turning radius	W_a	in	mm	366		9,300		419		10,650	
	4-36	Internal turning radius	b_{13}	in	mm	94		2,400		117		2,975	
	PERFORMANCE	PERFORMANCE											
CUMMINS QSL9 TIER 4F ENGINE - TE 32													
5-1		Travel speed with / without load		mph	km/h	13.0	21	14.3	23	13.0	21	14.3	23
5-2		Lifting speed with / without load		ft/min	m/s	55	0.28	94	0.48	55	0.28	94	0.48
5-3		Lowering speed with / without load		ft/min	m/s	91	0.46	89	0.45	91	0.46	89	0.45
5-7		Gradeability - 1 mph 1.6 km/h with / without load (5)		%	%	21	21	32	32	21	21	32	32
PERFORMANCE													
CUMMINS QSM11 335HP TIER 3 ENGINE - TE 32													
5-1		Travel speed with / without load		mph	km/h	12.4	20	14.9	24	12.4	20	14.9	24
5-2		Lifting speed with / without load		ft/min	m/s	55	0.28	94	0.48	55	0.28	94	0.48
5-3		Lowering speed with / without load		ft/min	m/s	91	0.46	89	0.45	91	0.46	89	0.45
5-7		Gradeability - 1 mph 1.6 km/h with / without load (5)		%	%	21	21	32	32	21	21	32	32
PERFORMANCE													
QSM11 300HP TIER 3 ENGINE - TE 27													
5-1	Travel speed with / without load		mph	km/h	11.8	19	13.7	22	11.8	19	13.7	22	
5-2	Lifting speed with / without load		ft/min	m/s	49	0.25	94	0.48	49	0.25	94	0.48	
5-3	Lowering speed with / without load		ft/min	m/s	91	0.46	89	0.45	91	0.46	89	0.45	
5-7	Gradeability - 1 mph 1.6 km/h with / without load (5)		%	%	18	18	32	32	18	18	32	32	

- (1) Load capacities shown with mechanical pile slope (MPS) spreader. Deduction for using powered pile slope spreader is approx. 2,000 lbs. (900 kg)
- (2) From face of front tires.
- (3) With Mechanical Pile Slope (MPS). For optional Powered Pile Slope (PPS) function: deduct 12.2 in (310 mm).
- (4) Full suspension seat in depressed position.
- (5) Spreader at 315 in (8.0 m) high, central above front axle; container 0 in/mm in front of tires; includes 2 x 4 in (100 mm) clearance.
- (6) Gradeability figures provided for comparison of tractive performance, but are not intended to endorse the operation of vehicle on the stated inclines.

GENERAL	1-1	Manufacturer				HYSTER			
	1-2	Model designation				RS 46-29/33/36/41 CH			
	1-3	Powertrain / drivetrain				Diesel			

ENGINE	7-1	Engine manufacturer / model			CUMMINS / QSM 11		Cummins / QSM 11		Cummins / QSL9	
	7-1a	EPA / CE compliance			Tier 3 / Stage IIIA		Tier 3 / Stage IIIA		Tier 4 / Stage IV	
	7-2	Engine power output according to ISO 1585	hp	HP kW	300	224	335	250	350	261
	7-2-1	Engine power output - Peak	hp	HP kW	300	224	365	272	380	283
	7-3	Rated speed	rpm	1/min	2,100		2,100		2,100	
	7-3-1	Engine torque @rpm (1/min)	lb-ft	N-m	1,050 @ 1000	1,424 @ 1000	1,235 @ 900	1,674 @ 900	1,200 @ 1500	1,627 @ 1500
	7-4	Number of cylinders / displacement	# / cm3		6 / 659	6 / 10,800	6 / 659	6 / 10,800	6 / 543	6 / 8,900
		Turbocharger	Type		Wastegate, water cooled		Wastegate, water cooled		Variable geometry, water cooled	
	7-8	Alternator output	Amps		120		120		120	
	7-9	Electric system voltage	V		24		24		24	
7-10	Battery voltage, rated capacity	V / Ah		24 / 120		24 / 120		24 / 120		

DRIVE	8-1	Drive control / Transmission	Type / #		Powershift Transmission		Powershift Transmission		Powershift Transmission	
	8-2	Transmission manufacturer / type	Type / #		Spicer Off-Highway TE-27		Spicer Off-Highway TE-32		Spicer Off-Highway TE-32	
	8-4	Transmission speeds forward / backward	#		4 / 4		4 / 4		4 / 4	
	8-5	Coupling	Type		Torque Converter		Torque Converter		Torque Converter	
	8-6	Wheel drive / drive axle manufacturer / type	Type / #		Kessler D102		Kessler D102		Kessler D102	
	8-11	Service brake	Type		Oil immersed (wet) disc		Oil immersed (wet) disc		Oil immersed (wet) disc	
	8-12	Parking brake	Type		Spring applied, dry disc on drive axle		Spring applied, dry disc on drive axle		Spring applied, dry disc on drive axle	

SPREADER	9-1	Spreader manufacturer / type	Type / #		Elme / 817		Elme / 817		Elme / 817	
	9-1-1	Pile slope, mechanical without PPS	degrees		3		3		3	
	9-1-3	Pile slope, total with PPS	degrees		6		6		6	
	9-3	Size of containers	ft		ISO 20' - 40'		ISO 20' - 40'		ISO 20' - 40'	
	9-4	Side shift	b ₀	in mm	+ 31.5 / - 31.5	+ 800 / - 800	+ 31.5 / - 31.5	+ 800 / - 800	+ 31.5 / - 31.5	+ 800 / - 800
	9-6-1	Rotation angle, without override	degrees		+12 / -12		+12 / -12		+12 / -12	
9-6-2	Rotation angle, with override	degrees		+185 / -95		+185 / -95		+185 / -95		

MISC	10-1	Operating pressure for attachments	psi	bar	2,031	140	2,031	140	2,031	140
	10-2	Oil volume for attachments	gpm	l/m	29	110	29	110	29	110
	10-3	Hydraulic tank capacity	gal	l	165	625	165	625	165	625
	10-4	Fuel tank capacity	gal	l	219	830	219	830	219	830
	10-4-1	DEF/AdBlue Tank capacity	gal	l	N/A		N/A		15	57
	10-5	Steering design			Hydrostatic		Hydrostatic		Hydrostatic	
	10-6	Number of steering rotations			6.0		6.0		6.0	
10-7	Sound pressure level at driver's seat (7)	Lpaz	dB(A)	78		78		75		


NOTES:

Specifications are affected by the condition of the vehicle and how it is equipped, as well as the nature and condition of the operating area. Inform your dealer of the nature and condition of the intended operating area when purchasing your Hyster® truck.

- Load capacities shown with mechanical pile slope (MPS) spreader. Deduction for using powered pile slope spreader is approx. 2,000 lbs. (900 kg)
- From face of front tires.
- With Mechanical Pile Slope (MPS). For optional Powered Pile Slope (PPS) function: deduct 12.2 in (310 mm).
- Full suspension seat in depressed position.
- Spreader at 315 in (8.0 m) high, central above front axle; container 0 in/mm in front of tires; includes 2 x 4 in (100 mm) clearance.
- Gradeability figures provided for comparison of tractive performance, but are not intended to endorse the operation of vehicle on the stated inclines.
- Add 2 dB(A) for option with additional cab fan.

All capacities are according to EN1459.

All specifications and capacities are valid for trucks equipped with a Hyster® container handling spreader for handling ISO containers.

 **Safety:** This truck conforms to the current EU requirements.

NOTICE:

Care must be exercised when handling elevated loads. Operators must be trained and must read, understand and follow the instructions contained in the Operating Manual.

All values are nominal values and they are subject to tolerances. For further information, please contact the manufacturer.

Hyster products are subject to change without notice.

Lift trucks illustrated may feature optional equipment. Values may vary with alternative configurations.

CERTIFICATION: Hyster lift trucks meet the design and construction requirements of B56.1-1969, per OSHA Section 1910.178(a)(2), and also comply with the B56.1 revision in effect at time of manufacture. Certification of compliance with the applicable ANSI standards appears on the lift truck. Performance specifications are for a truck equipped as described under Standard Equipment on this Technical Guide. Performance specifications are affected by the condition of the vehicle and how it is equipped, as well as by the nature, condition of the operating area, proper service and maintenance of the vehicle. If these specifications are critical, the proposed application should be discussed with your dealer.

NOTE: Specifications, unless otherwise listed, are for a standard truck without optional equipment.

Specification data is based on VDI 2198.

> FEATURES AND OPTIONS

PERFORMANCE	STD	OPT
Cummins QSL 9 diesel engine rated 350 hp (271 kW) Tier 4* variable geometry turbocharger, water cooled	x	
Cummins QSM11 diesel engine rated 300 hp (224 kW) Tier 3* wastegate turbocharger, water cooled	x	
Cummins QSM11 diesel engine rated 335 hp (250 kW) Tier 3* wastegate turbocharger, water cooled		x
Hibernate idle	x	
Hydraulically driven on-demand cooling fan	x	
120 amp alternator	x	
Powertrain protection system	x	
Heavy duty air intake	x	
High mount exhaust	x	
Spicer Off-Highway TE-32 4-speed auto-shifting transmission*	x	
Spicer Off-Highway TE-27 4-speed auto-shifting transmission*	x	
Kessler D102 drive axle with wet disc brakes	x	
DRIVE	STD	OPT
Travel speed limiter - unconditional (adjustable)		x
Travel speed limiter - loaded (adjustable)	x	
18.00-25 40PR Pneumatic Bias Ply drive and steer tires	x	
18.00-33 36PR Pneumatic Bias Ply drive and steer tires	x	x
18.00-25 40PR Goodyear Pneumatic Bias Ply drive and steer tires		x
18.00-R25 Goodyear Slick Radial drive and steer tires		x
18.00-25 40PR Bridgestone STMS Slick Bias Ply drive and steer tires		x
18.00-R36 Michelin XZM Pneumatic Radial drive and steer tires		x
18.00-R36 Goodyear Pneumatic Slick Radial drive and steer tires		x
18.00-33 36PR Goodyear Pneumatic Bias Ply drive and steer tires		x
LIFT	STD	OPT
On-demand load sensing hydraulic system	x	
Automatic throttle-up when lifting (in neutral or inching)	x	
2-stage boom for 5-high 1st row stacking	x	
6-high 1st row stacking		x
Load Moment Indicator (integrated in digital operator display)	x	
High speed hoist system - below 10 tons	x	
Hydraulic system temperature protection with performance de-rate		x
Container weighing system SOLAS compliant		x

HANDLING	STD	OPT
CANBus Spreader, Hyster Model 817 with rotation	x	
Mechanical Pile Slope	x	
Powered Pile Slope		x
Dampening Cylinders	x	
Powered Dampening Cylinders		x
Wide Twistlock Position (WTP) container handling spreader		x
Attachments for steel load handling		x
Attachments for wind industry load handling		x
4 lifting eyes located on end beam corners	x	
4 lifting eyes located under center beam of spreader		x
Spreader Guides located at end of spreader beams		x
Spreader Guides located 19.9" (506mm) inwards from center of spreader end beam		x
Rotation stops with override	x	
Automatic one-touch Extend/Retract (20'/40') for spreader Automatic one-touch Extend/Retract (20'/40') for spreader		x
Stops for 30' containers		x
Vertical lift		x
Stops for 20-40' containers		x
ERGONOMICS	STD	OPT
Manual sliding cabin for service access	x	
Powered partial-sliding cabin, including additional mirrors on top of fenders		x
Powered full-sliding cabin, including rear view mirrors, front rail, right side stairway, and handrails		x
Full steel cab operator compartment	x	
Isolated mounting for low noise and vibration	x	
Operator presence system	x	
Mechanical suspension seat	x	
Deluxe air suspension seat		x
Low backrest on seat*		x
Cloth seat cover	x	
Vinyl seat cover		x
Seat heating		x
2-point high visibility seatbelt	x	
3-point high visibility seatbelt		x
Floor mat	x	
Coat hook	x	

FEATURES AND OPTIONS <

Front, top and rear wipers	x	
"H"-pattern front wiper		x
"I"-pattern front wiper	x	
Front and rear window defrosters	x	
Left side handrails, stairway and cabin door	x	
Right side door	x	
Right side handrails and stairway		x
Left side stair lights		x
7" Color digital operator display	x	
Seat-side joystick hydraulic control	x	
Steering wheel with spinner knob	x	
Directional control lever	x	
Manual park brake	x	
Automatic park brake		x
Interior wide angle mirrors	x	
Heater with 3 speed fan	x	
Telescoping & tilting steering column	x	
DC/DC converter 24 volt/12 volt with socket*		x
Air conditioning		x
Reading light		x
Sun shades on top and rear		x
Trainer seat		x
Recirculation fan	x	
Rear locking console in cab		x
Accessory mounting post		x
Heated top window		x
Radio preparation set-up (wiring, two speakers and antenna)		x
VISIBILITY	STD	OPT
External wide angle mirrors mounted on rear of front fenders	x	
External wide angle mirrors mounted on top of front fenders		x
Rear view camera system		x
Halogen work lights	x	
High Performance LED work lights		x
LED twistlock indicator lights	x	


LED stop/tail/brake lights	x	
Turn signals, hazard & marker lights (LED)	x	
OPERATION	STD	OPT
Electric air horn 112 dBA	x	
Visible alarm – Amber strobe light	x	
Audible alarm – Reverse direction activated 82–102 dB(A), self-adjusting	x	
Forward motion alarm		x
Seatbelt interlock for engine start		x
Seatbelt indicator light on top of cab		x
Tire pressure monitoring system		x
Lockable battery disconnect switch	x	
NATO plug start aid		x
"Empty seat" engine shutdown		x
Key switch start	x	
Key switch start with seat belt interlock for engine start and operation		x
Non-lockable fuel cap	x	
Lockable fuel cap		x
Diesel fuel inlet strainer in filler neck		x
Hyster Tracker wireless asset management system	x	
Hyster Tracker wireless asset management - Access / Verification		x
Hyster Tracker wireless asset management - Monitoring		x
Auto greasing system for basic truck & outer boom		x
Auto greasing system for inner boom and spreader		x
24 volt electrical system	x	
Engine block heater 110 & 240 volt		x
Steer wheel lug nut protection	x	
Engine compartment light		x
APPEARANCE	STD	OPT
Hyster yellow paint base truck	x	
Special paint base truck		x
SUPPLEMENTAL	STD	OPT
Literature package	x	
Operator's manual	x	
CE certification*		x
Warranty: 12 Months / 2,000 Hours Parts & Labor manufacturer's warranty	x	

*Standard or optional in selected markets. Other options available through Special Products Engineering Department (SPED). Contact Hyster for details.



Hyster Company
P.O. Box 7006
Greenville, North Carolina
27835-7006
Part No. RS46CH/TG
03/2019 Litho in U.S.A.

Visit us online at www.hyster.com or call us at **1-800-HYSTER-1**.

Hyster, , and STRONG PARTNERS. TOUGH TRUCKS. and MONOTROL are registered trademarks in the United States and certain other jurisdictions. Hyster products are subject to change without notice.

Trucks may be shown with optional equipment. © 2019 Hyster Company. All rights reserved.